



JOHN PSARRAS
S&P CHARTERING



IN PIRAEUS SINCE 1981

Ph:+30 210 4123696 4133931 4115482 Fx:+30 210 4170618
E'Mail: psarras@psarrasj.gr Website:www.psarrasj.gr
(Members of Hellenic Shipbrokers Association - 1984)

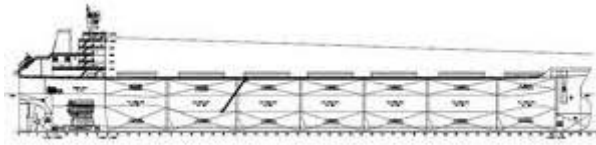
BI-MONTH REPORT

MID APRIL 2021

The scope of this report is to assist our clients and friends with a quick glance every about 15 days to get a feeling of the market by reading the more interesting sales in view of higher or lower prices of the main vessels types as well as the demolition prevailing prices.

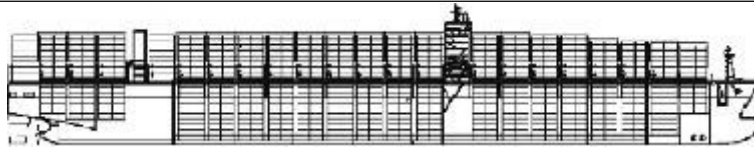


Copyright:V.Tonic



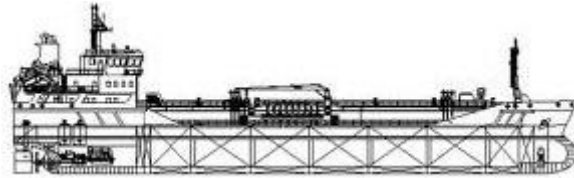
BULK CARRIERS

| NAME | DWT | Y.O.B | P.O.B | PRICE |
|--------------------------|----------------|--------------|---------|-------------------------------------|
| LINDA DREAM | 180180 | 2007 | JAPAN | 20 MIL USD TO CHINESE |
| KUMAI SHAGANG | 179191 | 2011 | S.KOREA | 26.8 MIL USD TO GREEKS |
| CAPE RAY | 177853 | 2007 | CHINA | 16 MIL USD TO CHINESE |
| JIN RUI FENG | 93755 | 2012 | CHINA | 18 MIL USD TO CHINESE |
| NANAUMI | 93549 | 2008 | JAPAN | 25,2 MIL USD TO GREEKS |
| GH HARMONY | 92500 | 2010 | CHINA | 13 MIL USD TO UNDISCLOSED |
| STDR BELLA | 84800 | 2021 | CHINA | 30 MIL USD TO UNDISCLOSED |
| XI JIANG YUE | 74940 | 2011 | JAPAN | 18,5 MIL USD TO GREEKS |
| SNOWY EMPEROR | 63516 63411 | 2015 | CHINA | EN BLOC 38 MIL USD TO UNDISCLOSED |
| GOLDEN ROSE | 56628 | 2011 | CHINA | 13 MIL USD TO CHINESE |
| HUA RONG 5 | 52713 | 2012 | CHINA | 11,3 MIL USD TO CHINESE VIA AUCITON |
| V FULMAR | 52307 | 2004 | JAPAN | 9,25 MIL USD TO UNDISCLOSED |
| RIGHT HERO | 51725 | 2009 | JAPAN | 11 MIL USD TO UNDISCLOSED |
| SWEET BRIER | 49507 | 2008 | JAPAN | 10,1 MIL USD TO INDONESIANS |
| LILY OLDENDORFF | 37913 | 2017 | CHINA | 15 MIL USD TO UAE BASED |
| PACIFIC 05 PACIFIC 06 | 33702 33671 | 2009 2010 | CHINA | EN BLOC 18 MIL USD TO UNDISCLOSED |
| VASILIS | 32081 | 2011 | JAPAN | 11,5 MIL USD TO GREEKS |
| NORDIC BULKER 2 | 28458 | 2002 | JAPAN | 5,5 MIL USD TO LEBANESE |



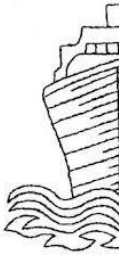
CONTAINER SHIPS

| NAME | DWT | TEU | Y.O.B. | P.O.B | PRICE |
|-----------------------|----------------|--------------|--------------|--------------------|-----------------------------------|
| ST BLUE | 33381 | 2535 | 2011 | JAPAN | 22,5 MIL USD TO UNDISCLOSED |
| FLORIDA BAY | 50760 | 4253 | 2003 | S.KOREA | 28 MIL USD TO UNDISCLOSED |
| CONSTANTINOS P | 49835 | 4249 | 2011 | CHINA | 25 MIL USD TO UNDISCLOSED |
| ROBIN 1 | 34700 | 2797 | 2009 | CHINA | 15 MIL USD TO NORWEGIANS |
| BOMAR CAEN ROSSINI | 34289 33900 | 2556 2478 | 2004 2005 | S.KOREA GERMANY | EN BLOC 30 MIL USD TO UNDISCLOSED |
| SEABOXER III | 23695 | 1740 | 2010 | CHINA | 15 MIL USD TO FRENCH |
| A KIBO | 21937 | 1708 | 2008 | JAPAN | 13 MIL USD TO UNDISCLOSED |



TANKERS

| NAME | DWT | HULL | Y.O.B | P.O.B. | PRICE |
|--|----------------------------------|------|------------------------------|---------|---|
| TOBA | 310389 | DH | 2004 | JAPAN | ABT 26 MIL USD TO UNDISCLOSED |
| SANTA MARINA | 299984 | DH | 2004 | JAPAN | 29 MIL USD TO INDIANS |
| DHT CONDOR DHT LAKE DHT RAVEN | 320050 298564 298563 | DH | 2004 | S.KOREA | EN BLOC 85,5 MIL SD TO UNDISCLOSED |
| SUPREME | 164551 | DH | 2002 | S.KOREA | 15.25 MIL USD TO UAE BASED |
| A SYMPHONY A MELODY | 149995 | DH | 2001 | JAPAN | EN BLOC 29,5 MIL USD TO UNDISCLOSED |
| CELTIC SEA SULO SEA | 105611 105522 | DH | 2003 2005 | JAPAN | EN BLOC 26 MIL USD TO HK BASED |
| NORD LARKSPUR | 74198 | DH | 2017 | S.KOREA | 30 MIL USD SINGAPOREANS |
| SCF PLYMOUTH SCF PRUDENCIA | 74600 | DH | 2011 2012 | S.KOREA | EN BLOC 39,5 MIL USD TO UNDISCLOSED |
| NORD HUMMOCK | 37158 | DH | 2007 | S.KOREA | ABT 9,5 MIL USD TO UNDISCLOSED |
| CHEMBULK ULSAND | 20812 | DH | 2007 | S.KOREA | 7,75 MIL USD TO UNDISCLOSED (StSt Tanker) |
| OCTADEN AS OLIVIA AS OMARIA AS ORELIA | 19983 19981 19974 19971 | DH | 2007 2007 2007 2008 | JAPAN | EN BLOC 41 MIL USD TO UK BASED |



DEMOLITION



BANGLADESH

| NAME | LDT | DWT | Y.O.B | P.O.B. | PRICE |
|-------------|------|------|-------|--------|--------------------|
| WIN SHENG 6 | 2836 | 4360 | 1979 | JAPAN | 420 USD PER LDT |



INDIA

| NAME | LDT | DWT | Y.O.B | P.O.B. | PRICE |
|-------|------|------|-------|---------|--------------------|
| RAHAL | 3232 | 1118 | 1972 | GERMANY | 435 USD PER LDT |



PAKISTAN

| NAME | LDT | DWT | Y.O.B | P.O.B. | PRICE |
|--------|------|-------|-------|--------|--------------------|
| MASS I | 9302 | 47172 | 1996 | JAPAN | 502 USD PER LDT |

Disclaimer

All information stated in this report has been collected from a variety of maritime sources and is presented in good faith and without any guarantee from our part .

J. PSARRAS S+P CHARTERING, shall not accept any responsibility for any errors and/or omissions arising from this report and cannot be held responsible for any action taken and/or losses occurred as a result of the details included in this report.

Recirculation of same is not permitted without the written agreement of the aforementioned company, which is the only entitled one to produce copies of same.